

# INSECTS & FUNGUS CONTROL

Once active, fungal diseases can weaken plants, leaving them prone to disease and insect pests. The sooner you can treat your plants, the better they will do. Take a picture of the plant, bring in a sample and we can recommend what to treat your plant with.



## DORMANT OIL KIT

Dormant Oil Kits contain Horticultural Oil and Lime Sulphur that are combined and sprayed on most Deciduous Trees and Shrubs. These oils help clean up any overwintering eggs or fungi on your trees and shrubs. It is an excellent and environmentally friendly way to get ahead of insect and disease problems on your Fruit trees, Ornamental Trees, Cranberry, Roses, Dogwoods and many other trees and shrubs.

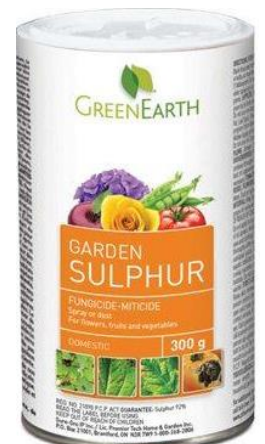
Dormant Oil must be sprayed before the leaves emerge and when the buds are just beginning to swell. Spray in early morning to allow sufficient time to dry before nightfall. You want to pick a day that there is no rain in the forecast and the temperature will stay above 4°C.



## GARDEN SULPHUR

Fungicide – Miticide

Can be applied as a dust or wettable powder spray. Controls powdery mildew, rust, black spot, scab, black knot, and certain mites. Spray or dust on shrubs, perennials, flowers, herbs, and vegetables.



## BORDO COPPER SPRAY

Green Earth Bordo Copper Spray controls disease and molds such as leaf spots, blights, anthracnose, downy and powdery mildew, black spot and more, on a variety of fruit trees, ornamentals, vegetables, and flowers. The water-soluble powder mixes easily with water and should be sprayed to thoroughly wet all foliage and stems. Can be applied one day before harvest on fruits and vegetables. Refer to label for number of days between applications.



## DISEASE PICTURES



*Black Spot*



*Powdery Mildew*



*Rust on Spruce*



*Oyster Shell Scale*

*Gall Mite on Maple*

